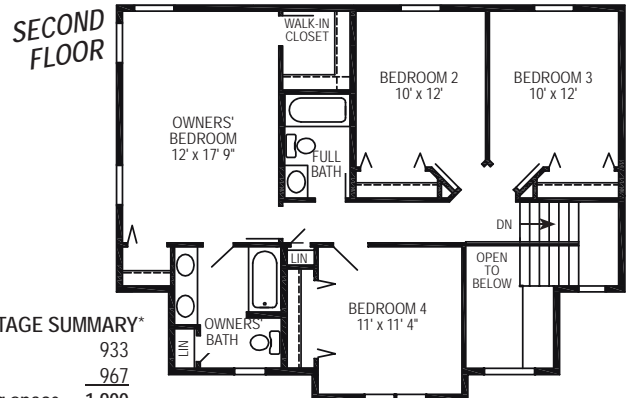
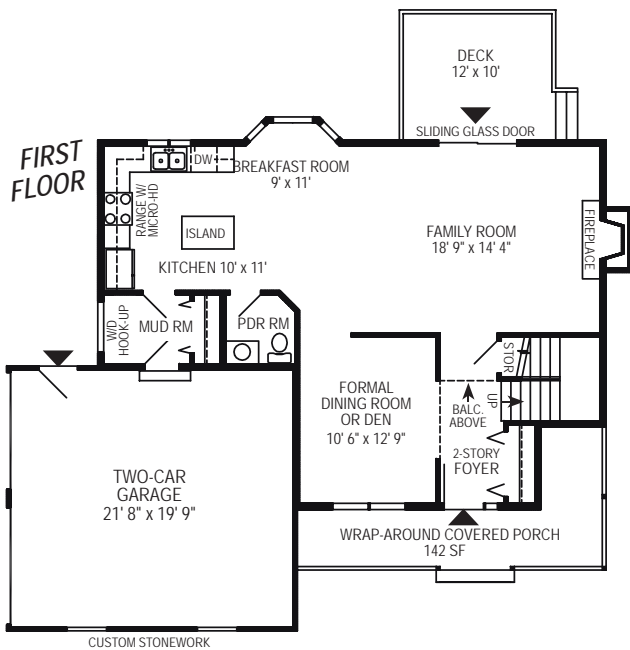




Artist's rendering shows the new RGB Marshall II design which can be custom built for you with all the personal touches that will make your new RGB home, everything you want it to be.

## The Marshall II Design



**SQUARE FOOTAGE SUMMARY\***

1st floor	933
2nd floor	967
<b>Finished living space</b>	<b>1,900</b>
Optional Basement	933
Two-car Garage	446

Yes! Everything you love about a country home is captured in this 4 bedroom, 2 1/2 bath classic, starting with it's covered wrap-around porch to an entertainment deck that lets backyard barbecues be an anytime treat.

Note how the spacious and well-proportioned rooms can be easily furnished for fireside gatherings, for formal dining, and for a sunny good morning in your windowed breakfast bay. You can even delegate all dining to this cheerful venue and use the dining room for a den.

And because a country home should provide leisure-time living you can expect step-saving convenience at every turn: in the efficient island kitchen, with its laundry/mud room and powder room set ups, and in a handy attached 2-car garage.

Upstairs, 3 ample bedrooms provide generous closet space and easy access to the hall bath, while your personal suite is a quiet retreat with a walk-in and second wardrobe closet, and a two-sink vanity that enhances the efficiency and enjoyment of your own private bath.

Look for the name brands you know mean quality, and check out RGB Quality Building Features at [www.RGBhomes.com](http://www.RGBhomes.com)



Impress yourself with a visit, call —  
**877 RGB-1986**  
 Open Every Day

\*Room dimensions and square foot calculations shown here are approximate. Plans are subject to field variations based on property characteristics and modifications that may be made from time to time. Your RGB Sales Representative will provide you with complete and accurate information as you design your own personally customized RGB home.  
 RGB ENTERPRISES, INC. • RGB REAL ESTATE, LLC • © RGB CUSTOM BUILDERS 2008 MII0308

