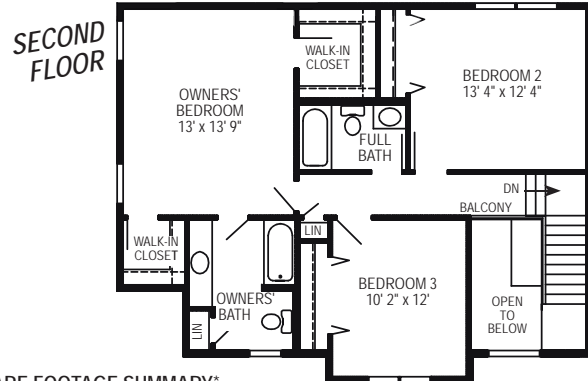
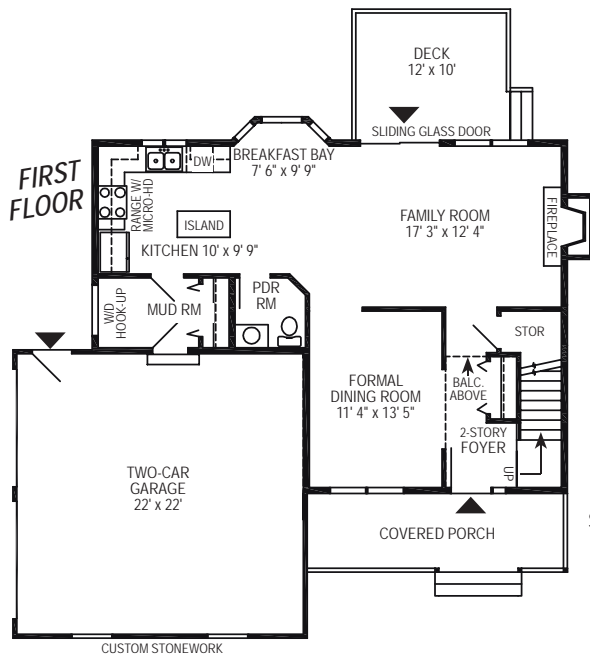




Artist's rendering shows the new RGB Marshall I design which can be custom built for you with all the personal touches that will make your new RGB home, everything you want it to be.

The Marshall I Design



SQUARE FOOTAGE SUMMARY*

1st floor	820
2nd floor	865
Finished living space	1,685
Optional Basement	820
Two-car Garage	483

This home makes the most of your nature-rich surroundings, whether you linger on the porch to take in the views, or step into the 2-story foyer and just glance ahead to the great room where a double-wide window and a sliding glass door invite the beauty of your country setting to be a part of your interior decor.

Note how the well-proportioned rooms invite easy furnishing options for formal dining, for fireside gatherings in the family room, and to

assure a sun-filled good morning in your window-wrapped breakfast bay.

And, to cater to today's busy lifestyle, this 3 bedroom, 2 1/2 bath home puts convenience at every turn, in the efficient island kitchen, with its laundry and powder room set ups, and a handy, attached 2-car garage. Upstairs, 2 ample bedrooms provide generous closet space and easy access to the hall bath, while your personal suite is a quiet retreat with two walk-in closets and your own private full bath.

Look for the name brands you know mean quality, and check out RGB Quality Building Features at www.RGBhomes.com

Impress yourself with a visit, call —

877 RGB-1986

Open Every Day



"A builder to believe in..." since 1986

*Room dimensions and square foot calculations shown here are approximate. Plans are subject to field variations based on property characteristics and modifications that may be made from time to time. Your RGB Sales Representative will provide you with complete and accurate information as you design your own personally customized RGB home. RGB ENTERPRISES, INC. • RGB REAL ESTATE, LLC • © RGB CUSTOM BUILDERS 2008 MI0308

